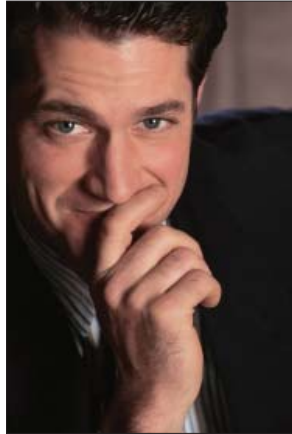




Microsoft Solutions from Sirius

Bolster your business with cutting edge solutions

Microsoft Corporation is a leader in software solutions and has earned a significant distinction in enterprise-class computing. In an effort to bring this benefit to companies, Sirius has invested in advancing its technical consultation capabilities by acquiring Microsoft® Gold Certified Partner status for Advanced Infrastructure, which means Sirius demonstrates superior levels of successful implementations, capabilities and certification in that area. (Microsoft Gold Certified Partners are required to meet rigorous requirements for certification and expertise).



In addition to being an IBM® Premier Business Partner and the world's largest IBM solution provider, Sirius has a team of seasoned professionals whose certification and expertise in IBM technologies and Microsoft products help provide your business with scalable, reliable and cost-effective solutions—strategies to facilitate the integration of Microsoft software with IBM servers and storage.

Why consider a Microsoft solution from Sirius?

Sirius' certified consultants provide:

- Expertise to integrate diverse applications and improve the interoperability between IBM and Microsoft products.
- Server optimization and consolidation studies (using C-DAT tool from IBM) to save companies considerable money in hardware, software, maintenance and operation costs.
- High availability implementations
- Backup and recovery solutions using Veritas® or Tivoli® storage compatibility features that allow streamlined backup of the Microsoft Exchange® server.
- Virtualization that works in concert with other systems software, such as VMware® ESX Server. Sirius consultants can implement and manage partitions of Microsoft Windows® OS with other platforms on a single physical server, thus enabling server consolidation and improved system flexibility and responsiveness.



SPOTLIGHT

Sirius provides

- Highly scalable IT infrastructure solutions
- Server solutions that meet your availability, backup and recovery requirements
- Certified technical consultants experienced in integration of Microsoft products with IBM products (software, servers and storage)
- Skills transfer

Sirius highlights

- IBM Premier Business Partner with over 27 years experience in IT infrastructure solutions
- World's largest IBM solution provider
- Recipient of IBM PartnerWorld Beacon Award for Best IBM System x Energy Management Solution in 2007
- Nearly 2,000 professional sales and technical certifications nationwide
- Operates three IBM Business Partner Innovation Centers (technology labs) in CO, MA and TX
- Leading IBM Global Financing provider
- IBM maintenance and services provider
- Partners with many of the industry's leading providers of hardware, software, storage and networking, including Brocade, Cisco, IBM, JDA Software, Lawson, Microsoft, NetApp, Novell, Oracle, SAP, SteelEye, Symantec, VMware and more



Learn more at www.siriuscom.com

While you're there, you can also access free webcasts on demand, register for upcoming events, access specific product and solution information, and get marketplace news.

1-800-460-1237
siriuscom.com

IBM System x implementation services

IBM System x™ servers provide exceptional high availability and performance to help you better manage your business environment. Our certified, experienced System x consultants help you leverage these strengths by providing you with pre-installation planning, hardware installation, Windows operating system (OS) installation, network configuration, and application migration assistance. Also, you will receive System x administration skills transfer and configuration documentation.

IBM BladeCenter implementation services

Blade servers fit into a bay of a chassis, which provides a backplane for independent servers, resulting in greater density, easy deployment and simplified maintenance. Sirius specialists provide implementation services for BladeCenter® servers, including configuration, verification and the implementation of IBM Director. In addition, you will receive configuration documentation of the chassis and relevant skills transfer.

Server consolidation cost-benefit analysis

Server consolidation and logical partitioning save companies considerable money and time, while decreasing the complexity of managing several servers. We will provide an experienced System x and server consolidation consultant to review your consolidation objectives, use C-DAT server data collection tool, collect non-Microsoft server information for analysis, analyze collected data and inventory findings, identify servers with similar workloads for potential consolidation, present proposed consolidation solutions, and provide a detailed solution document.

Additional IBM System x services

- Hardware installation/configuration
- Hardware upgrades and migration
- Server consolidation and business analysis
- System administration
- Windows NT®/2000/Terminal server
- High availability
- Backup and recovery
- Network performance optimization reviews
- Security, firewalls & VPNs (Linux®, Cisco® PIX®)
- Virus protection
- LAN/WAN architecture and design (Wireless)
- Citrix® Terminal Services & Thin clients
- Linux SAMBA/DNS/DHCP/Sendmail/VPN
- IBM Director
- IBM WebSphere® consulting and implementation
- IBM Lotus® Domino® / QuickPlace® /Sametime® / Workplace™
- Customer training
- Staging, integration and rollout



For more information, call 1-800-460-1237 or visit www.siriuscom.com

The IBM logo is a registered trademark, and the IBM Premier Business Partner emblem is a trademark, of International Business Machines Corporation, and are used together under license. IBM, BladeCenter, Domino, Lotus, QuickPlace, Sametime, Tivoli, and WebSphere are registered trademarks, and System x and Workplace are trademarks, of International Business Machines Corporation. Microsoft and the Microsoft Gold Certified Partner logo are registered trademarks of Microsoft Corporation. All other company, service and product names are trademarks or registered trademarks of their respective companies.