

Let Sirius help you succeed in your DataPower integration initiative

Do you have increasingly demanding needs for application integration to points inside or outside your enterprise? Do you need to connect legacy applications to the Web? Are you concerned about secure data handling performance? Traditional application integration can create even more issues, such as:

- ♦ Complex integrations that are difficult to debug, extend and maintain
- ♦ Data security exposures
- ♦ Long, costly development cycles for point-to-point integrations
- ♦ A general lack of the flexibility demanded in today's competitive marketplace

IBM® WebSphere® DataPower® appliances are purpose-built, easy-to-deploy platforms that simplify, secure and accelerate SOA Integration and Web services deployments. A DataPower solution:

- ♦ Provides integration between heterogeneous systems with transport and payload transformations
- ♦ Efficiently leverages your assets with content-based routing
- ♦ Easily interoperates with Web and Legacy applications
- ♦ Speeds time to market through a configuration-driven approach
- ♦ Meets the toughest security requirements of your network



By putting DataPower appliances in place with Sirius DataPower Secure Integration Advanced Edition, development of your integration scenarios can begin. Sirius consultants will develop integration scenario solutions based upon your specific requirements. Some examples of the integration scenarios that can be achieved in this solution package are:

- ♦ Authenticate / Authorize user access
- ♦ Data transformation between two MQ queues
- ♦ File transfer using FTP
- ♦ Polling for multiple files
- ♦ Merge two messages to a single message
- ♦ Split a single message into multiple messages

Sirius DataPower Secure Integration Advanced Edition will quickly integrate disparate applications to accelerate SOA adoption.

Your services engagement will begin with a planning session to review functional and non-functional requirements of your solution. Upon review and signoff of those requirements, three appliances will be installed and configured for use, ensuring that the appliances are visible and active on the network, that user domains are in place, and that solution environments are accessible.

Appliances:

- ♦ Three IBM DataPower XI50 appliances configured for production high availability with a separate development/test environment

Services:

- ♦ A **Solution Outline** to create planning and configuration documentation
- ♦ **Solution Implementation** for the installation and configuration of three appliances
- ♦ **Solution Delivery** including the development of up to five basic integration scenarios, and knowledge transfer of best practices

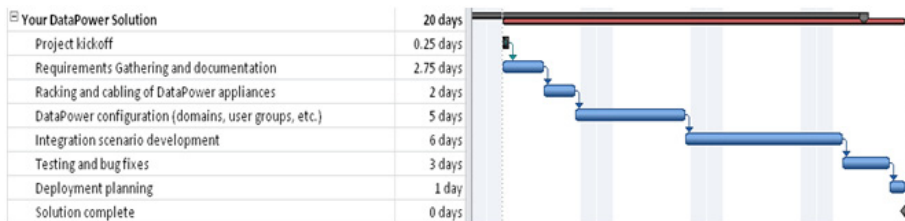
Cost:

- ♦ \$338,000
- ♦ Includes three IBM WebSphere DataPower appliances, and up to four weeks of integration services





Sirius DataPower Secure Integration Advanced Edition provides a rapidly deployable integration solution for your Web and legacy integration needs. Below is a sample timeline that represents the Sirius solution delivery cycle based upon integration scenarios with low to moderate complexity.



It is also a fast path to SOA enablement. We use a proven, proprietary methodology to ensure success and demonstrate value throughout each engagement.

♦ Define: **Sirius Solution Outline**

- Create a roadmap that analyzes, categorizes and prioritizes your DataPower usage
- Create a plan that outlines tasks, timelines and responsibilities to accomplish your business goals using DataPower

♦ Develop: **Sirius Solution Implementation**

- Collaborate with your business experts to create limited complexity or basic integration scenarios
- Install and configure DataPower appliances
- Create services for your application integration needs

♦ Deliver: **Sirius Solution Delivery**

- Transfer knowledge to your integration and IT experts

Sirius DataPower Secure Integration Advanced Edition allows you to extend your enterprise applications quickly while utilizing a proven security enforcement point.

Your solution implementation will begin with a planning session to review your functional and non-functional requirements. Upon review of those requirements, three appliances will be installed and configured for use, ensuring that the appliances are visible and active on the network, that user domains are in place, and that solution environments are accessible.

As development progresses, Sirius consultants will also provide valuable knowledge transfer of best practices for DataPower solutions, such as naming standards, firmware upgrades and logging.

THE SIRIUS BUSINESS OPTIMIZATION TEAM AND OUR SOLUTIONS

Sirius offers a comprehensive portfolio of solutions and services to meet the business optimization challenges of your organization. For more information about any of these offerings, please contact your Sirius representative.

